

Area Percent Report

*Extention*  
*3-14-22*

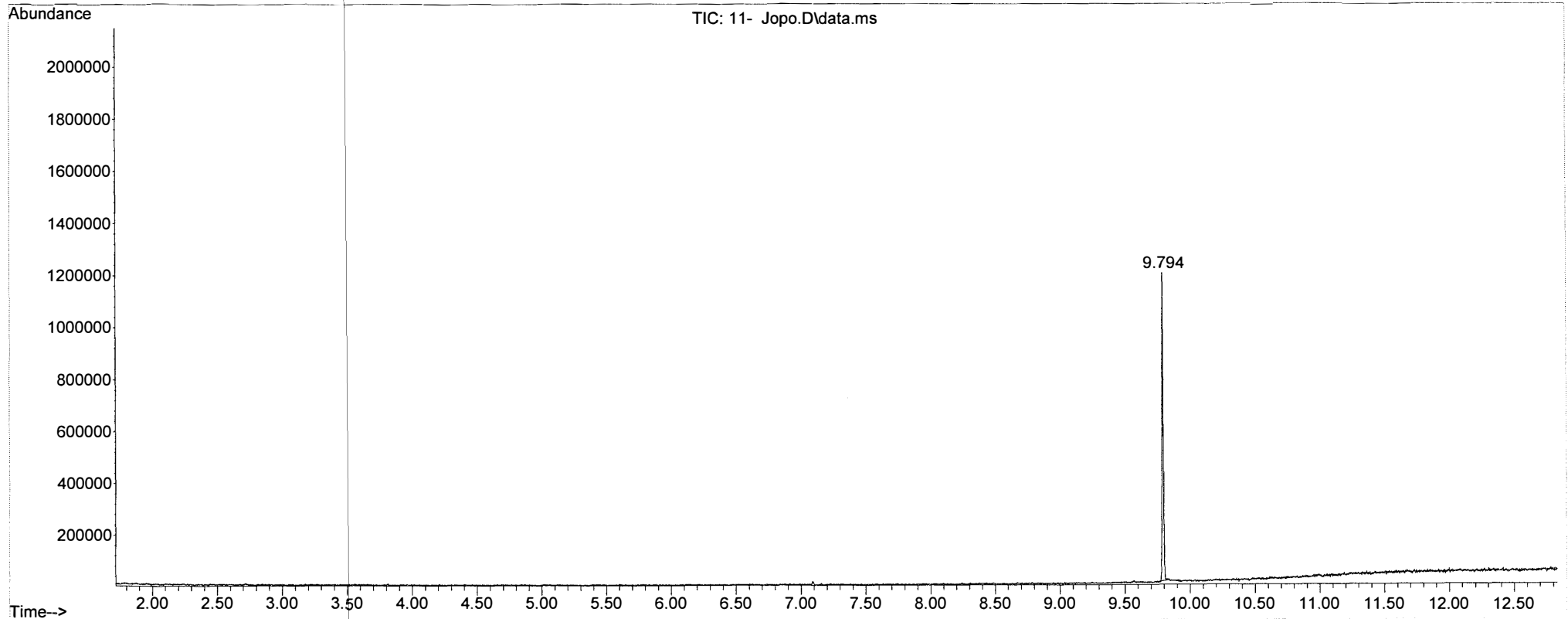
Data File : 11- 215081056 -Jopo.D  
Sample : P-717S )  
Misc : Silafluofen; in meoh  
Data Path : Q:\GCMS-08 Minimal\DATA\20220513\  
Aquired : 13 May 2022 12:42 Method : Hy\_Pest\_24cm\_S10.M  
Integrator: ChemStation Params : events.e  
InstName : GCMS 8 ALS Vial: 68  
Operator : Organic QC Lab

Signal : TIC: 11- 215081056 -Jopo.D\data.ms

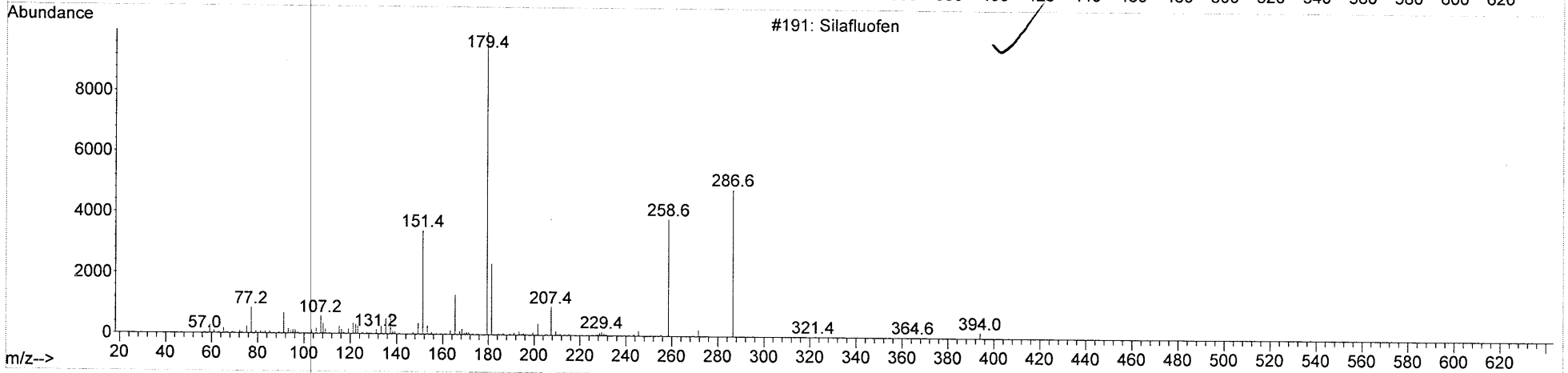
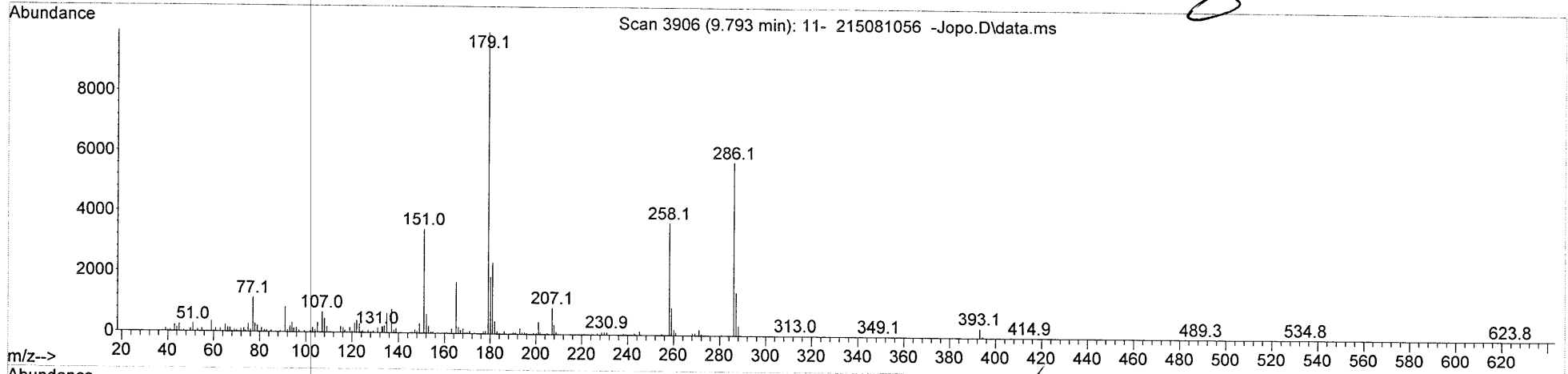
peak #	R.T. min	first scan	max scan	last scan	PK TY	peak height	corr. area	corr. % max.	% of total
1	9.794	3874	3906	3917	BB	1171932	7995086	100.00%	100.000%

Sum of corrected areas: 7995086

PT2021\_SVOC\_2.M Fri May 13 16:04:34 2022 QCMS-08



Library Searched : L:\Database\ACCU.L  
Quality : 76  
ID : Silafluofen



Lot #	215081056	Made by	slynes	Made Date	08/06/2015	CATALOG #	P-717S
Final Vol	50 mL	Final Conc	100 µg/mL	Vendor Lot			100 µg/mL
							P-717S
							Silafluofen (P-717S)
<b>Solvent</b>		<b>Ratio</b>		<b>Lot Numbers</b>		<b>Balance No.</b>	<b>Storage Condition</b>
Methanol		100				8	Ambient (>5 °
						<b>QC Location</b>	<b>Storage Location</b>
							4-2-5

NS	WC	Component	MW	CAS Number	Target	Product	Conc.	Lot No	Actual Concentration	Qty	Units	Purity	Concentration Prepared
1	<input type="checkbox"/>	<input checked="" type="checkbox"/> Silafluofen	408.58	105024-66-6	100 µg/mL	P-717N		25390		0.00518	g	96.9	103.6

Number of Components **1**

P-717S  
215081056  
  
 LOT