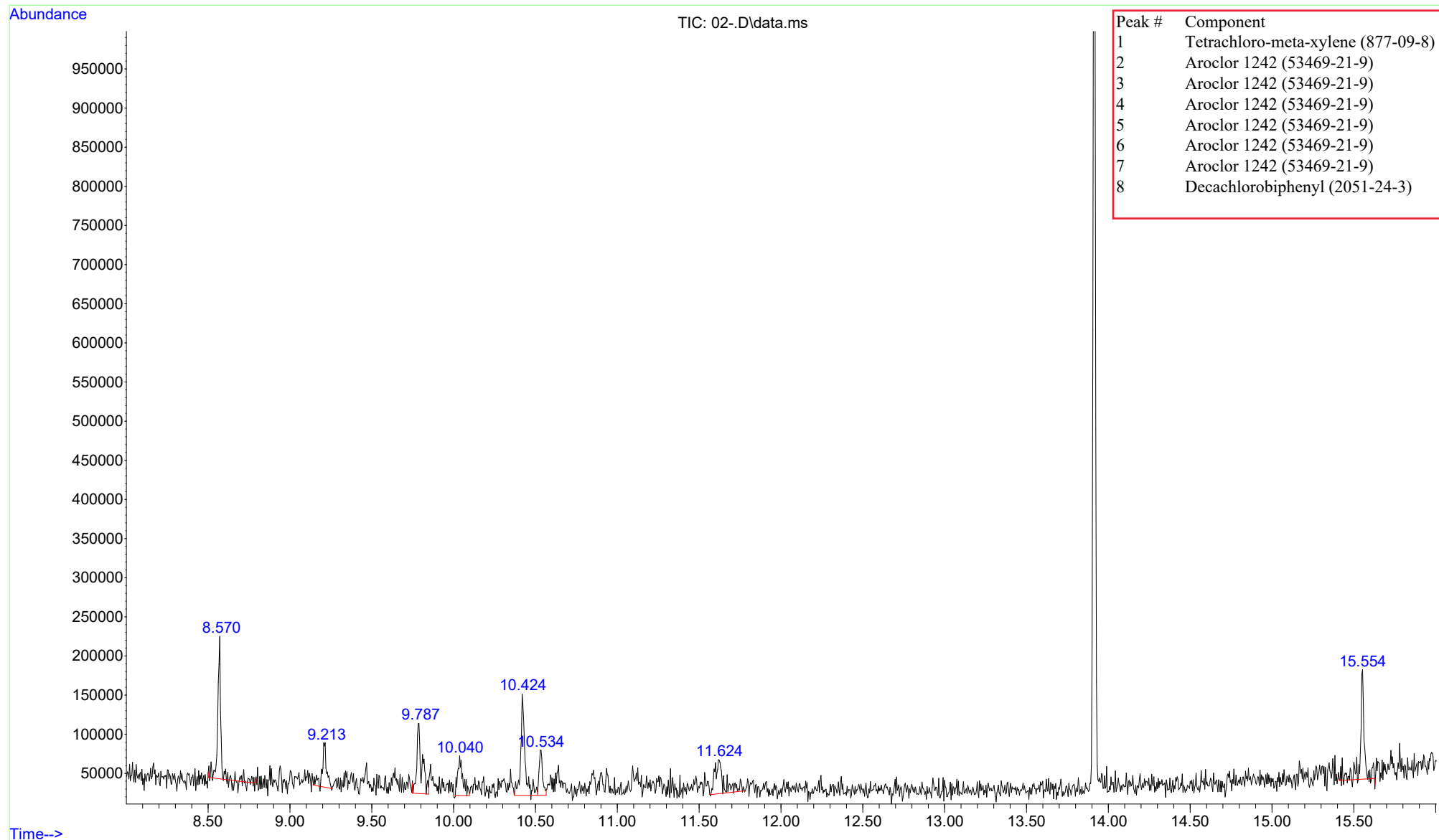


File :Q:\GCMS-06 Minimal\DATA\061719b\BSB\02-.D
Operator : D.C
Acquired : 17 Jun 19 04:29 pm using AcqMethod CHICK_2019_2S_2uL.M
Instrument : GCMS 6
Sample Name: C-242-WL-20X
Misc Info : WL Cal Std in Isooctane
Vial Number: 101



Column: DB-5MS, 30m, 0.25 ID, 0.25 um
Oven Program: 80c, 17c/min to 340c, 8min
GC Parameters: Cons. Split, 12psi constant flow
Split 2:1, 2uL inj.; GC/MS; INJ 270c



Peak is a Phthalate component, typical in Isooctane solvents and non-detectable via ECD (the method typically run)