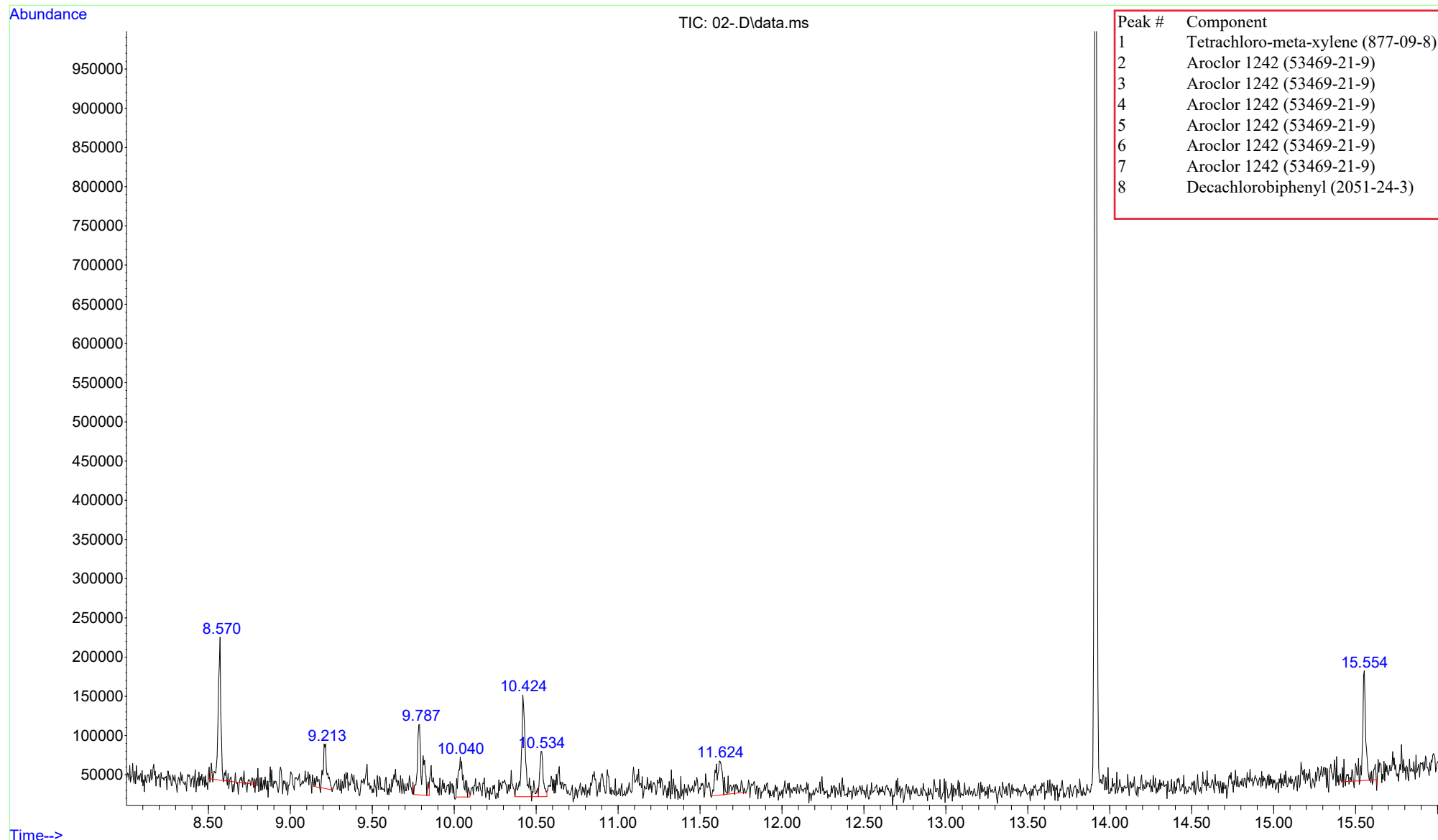


File :Q:\GCMS-06 Minimal\DATA\061719b\BSB\02-.D  
Operator : D.C  
Acquired : 17 Jun 19 04:29 pm using AcqMethod CHICK\_2019\_2S\_2uL.M  
Instrument : GCMS 6  
Sample Name: C-242-W1-10X  
Misc Info : WL Cal Std in Isooctane  
Vial Number: 101



Column: DB-5MS, 30m, 0.25 ID, 0.25 um  
Oven Program: 80c, 17c/min to 340c, 8min  
GC Parameters: Cons. Split, 12psi constant flow  
Split 2:1, 2uL inj.; GC/MS; INJ 270c



Peak is a Phthalate component, typical in Isooctane solvents and non-detectable via ECD (the method typically run)