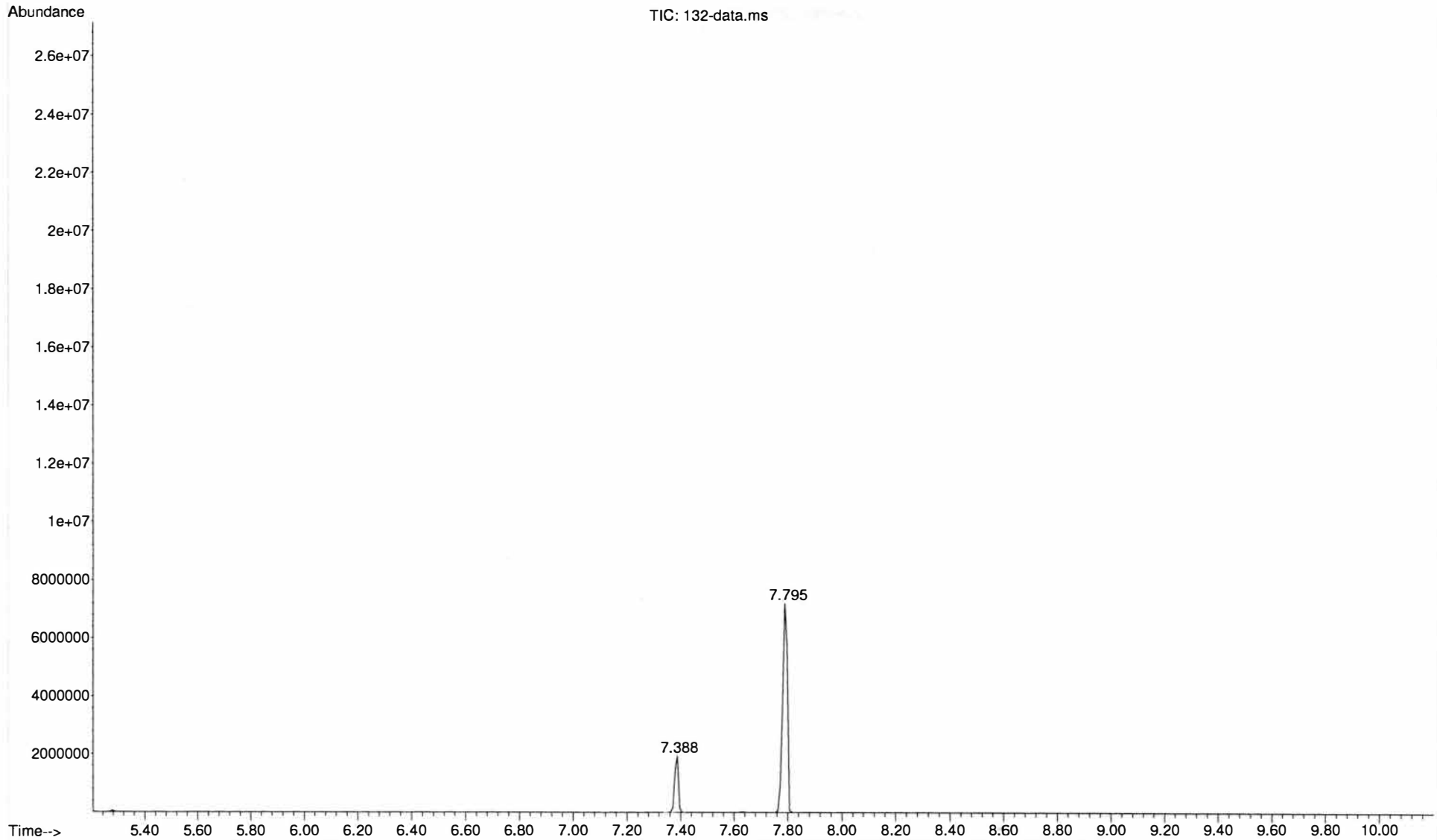


075

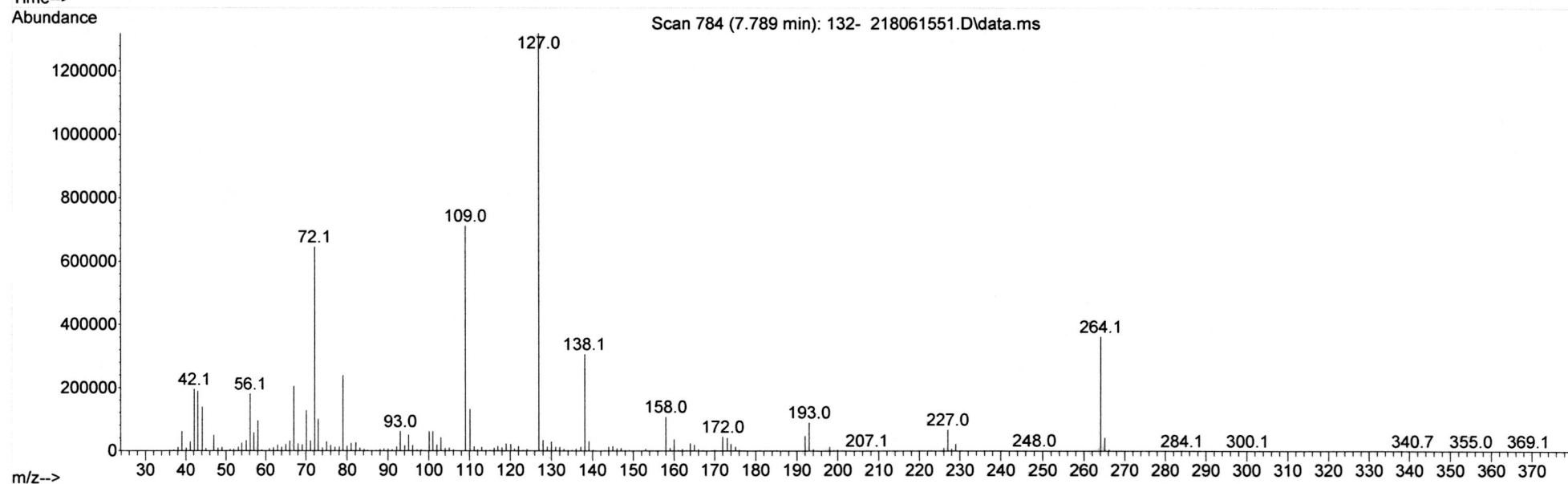
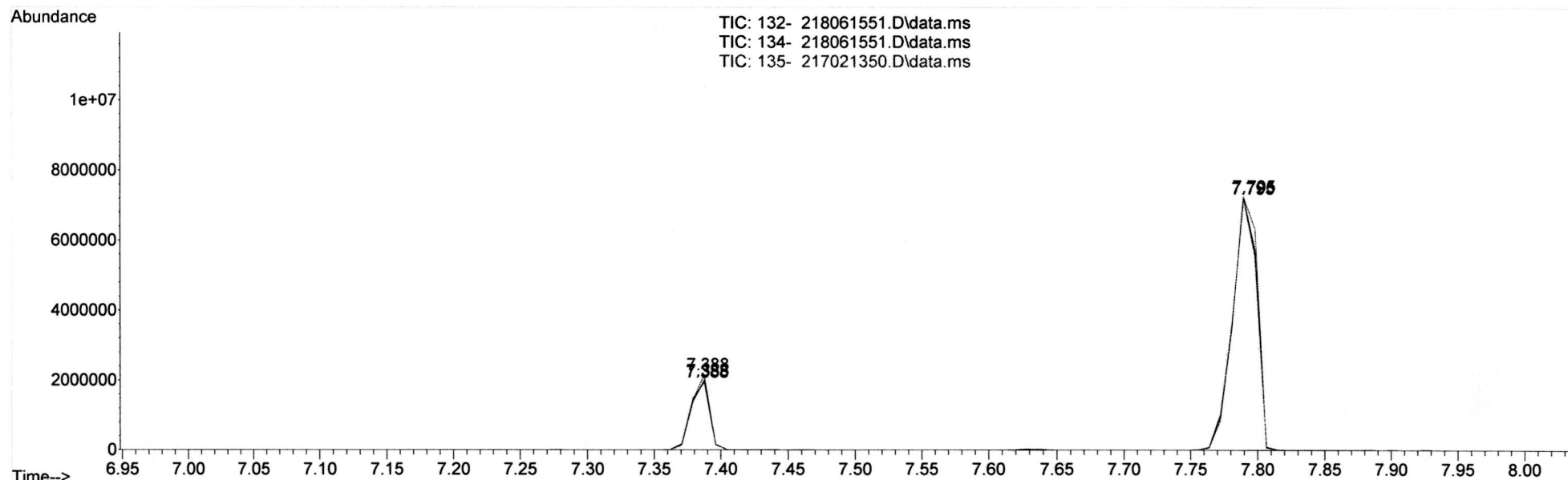
File :D:\MassHunter\GCMS\1\data\06201802\132-  
Operator : K.D  
Acquired : 22 Jun 2018 07:05 using AcqMethod KERLA-2017\_Short\_15Min.M  
Instrument : 5977B MSD  
Sample Name: P-075S-A-10X  
Misc Info : Phosphamidon @1000ug/mL in Acetone  
Vial Number: 109

Column: DB-5, 30m, 0.25 ID, 0.25um  
Oven Program: 100c, 1m, 30c/min to 320c, final 2min  
GC Parameters: Pulsed split 40psi 0.5m, 10psi constant flow  
Split 20:1, 1ul inj.; GC/MS: INJ 250c

oh  
6-22-18



File :D:\MassHunter\GCMS\1\data\06201802\132- 218061551.D  
Operator : K.D  
Acquired : 22 Jun 18 07:05 am using AcqMethod KERLA-2017\_Short\_15Min.M  
Instrument : 5977B MSD  
Sample Name: P-075S-A-10X  
Misc Info : Phosphamidon @1000ug/mL in Acetone  
Vial Number: 109



Data Path : D:\MassHunter\GCMS\1\data\06201802\  
 Data File : 132- 218061551.D  
 Acq On : 22 Jun 18 07:05 am  
 Operator : K.D  
 Sample : P-075S-A-10X  
 Misc : Phosphamidon @1000ug/mL in Acetone  
 ALS Vial : 109 Sample Multiplier: 1

Integration Parameters: autoint1.e  
 Integrator: ChemStation

Method : D:\MassHunter\GCMS\1\methods\CoolOven-CoolInlet.M  
 Title :

Signal : TIC: 132- 218061551.D\data.ms

peak #	R.T. min	first scan	max scan	last scan	PK TY	peak height	corr. area	corr. % max.	% of total
1	7.388	731	737	741	BB	1769364	19248981	21.31%	17.565%
2	7.795	779	785	791	BB	6891169	90339104	100.00%	82.435%

Sum of corrected areas: 109588085

Signal : TIC: 134- 218061551.D\data.ms

peak #	R.T. min	first scan	max scan	last scan	PK TY	peak height	corr. area	corr. % max.	% of total
1	7.388	732	737	741	BB	1757222	18934768	21.17%	17.469%
2	7.795	779	785	791	BB	6854588	89456483	100.00%	82.531%

Sum of corrected areas: 108391250

Signal : TIC: 135- 217021350.D\data.ms

peak #	R.T. min	first scan	max scan	last scan	PK TY	peak height	corr. area	corr. % max.	% of total
1	7.388	733	737	743	BB	1863029	19824664	21.40%	17.626%
2	7.795	778	785	791	BB	7063017	92647091	100.00%	82.374%

Sum of corrected areas: 112471755

Lot # 218061551

Made by slynes

Made Date 06/20/2018

CATALOG # P-075S-A-10X

1000 µg/mL

P-075S-A-10X

Phosphamidon (P-075S-A)

Final Vol 200 mL

Final Conc 1000 µg/mL

Vendor Lot

Solvent	Ratio	Lot Numbers
Acetone	100	

Balance No.	8	Storage Condition	Freeze (<-10 °
QC Location	BF-14	Storage Location	

NSWC Component	CAS Number	Target	Product	BarCode	Conc.	Lot No	P Conc	Actual Qty	Units	Purity
1 <input type="checkbox"/> <input type="checkbox"/> Phosphamidon	13171-21-6	1000 µg/mL	P-075N			041814MT	N/A	0.2003	g	98.6

Number of Components 1

QR-ORG-024  
Rev 01/16

