

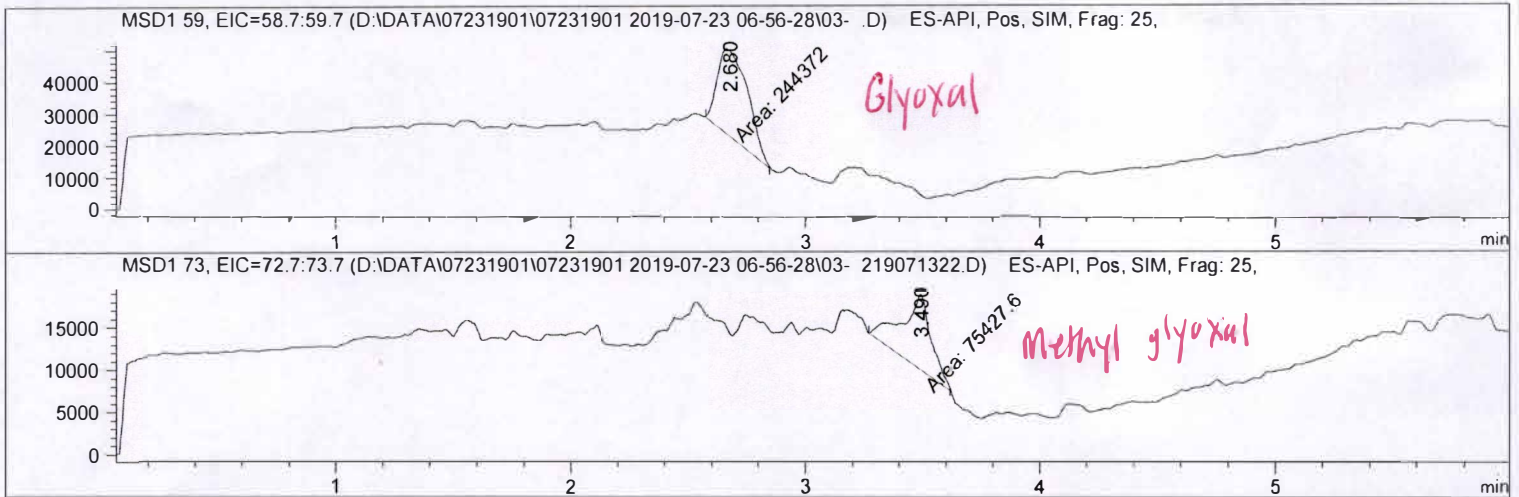
Name: M-556-MIXB

```

=====
Acq. Operator   : SYSTEM                      Seq. Line :    3
Acq. Instrument : LCMS-1                     Location  : P1-B4
Injection Date  : 7/23/2019 7:41:02 AM      Inj       :    1
                                           Inj Volume: 10.000 µl

Acq. Method     : D:\DATA\07231901\07231901 2019-07-23 06-56-28\GLYOXAL_GRAD0-20_COL_2.M
Last changed    : 7/23/2019 6:56:28 AM by SYSTEM
Analysis Method : C:\CHEM32\1\METHODS\Purity195_315.M
Last changed    : 4/10/2019 10:56:50 AM by SYSTEM
Method Info     : Operator: GA
                  Gradient Method Starting @ 100 % Water/0 % Acetonitrile to 0 % Water/100 %
                  Acetonitrile in 13 min, then 3 min at 100/0, post-run time 2 min. Flow rate:0.
                  3 ml/min, column Zorbax Eclipse Plus C-18, 2.1x50 mm, 1.8 micron particule
                  size. Agilent 1290 Infinity II LC system, Agilent 6120 Quadropole MS Detector.
                  No UV Reference.
    
```

Additional Info : Peak(s) manually integrated



Area Percent Report

```

Sorted By      : Signal
Multiplier     : 1.0000
Dilution       : 1.0000
Do not use Multiplier & Dilution Factor with ISTDs
    
```

Signal 1: MSD1 59, EIC=58.7:59.7

Peak #	RetTime [min]	Type	Width [min]	Area	Height	Area %
1	2.680	MM	0.1514	2.44372e5	2.68995e4	100.0000

Totals : 2.44372e5 2.68995e4