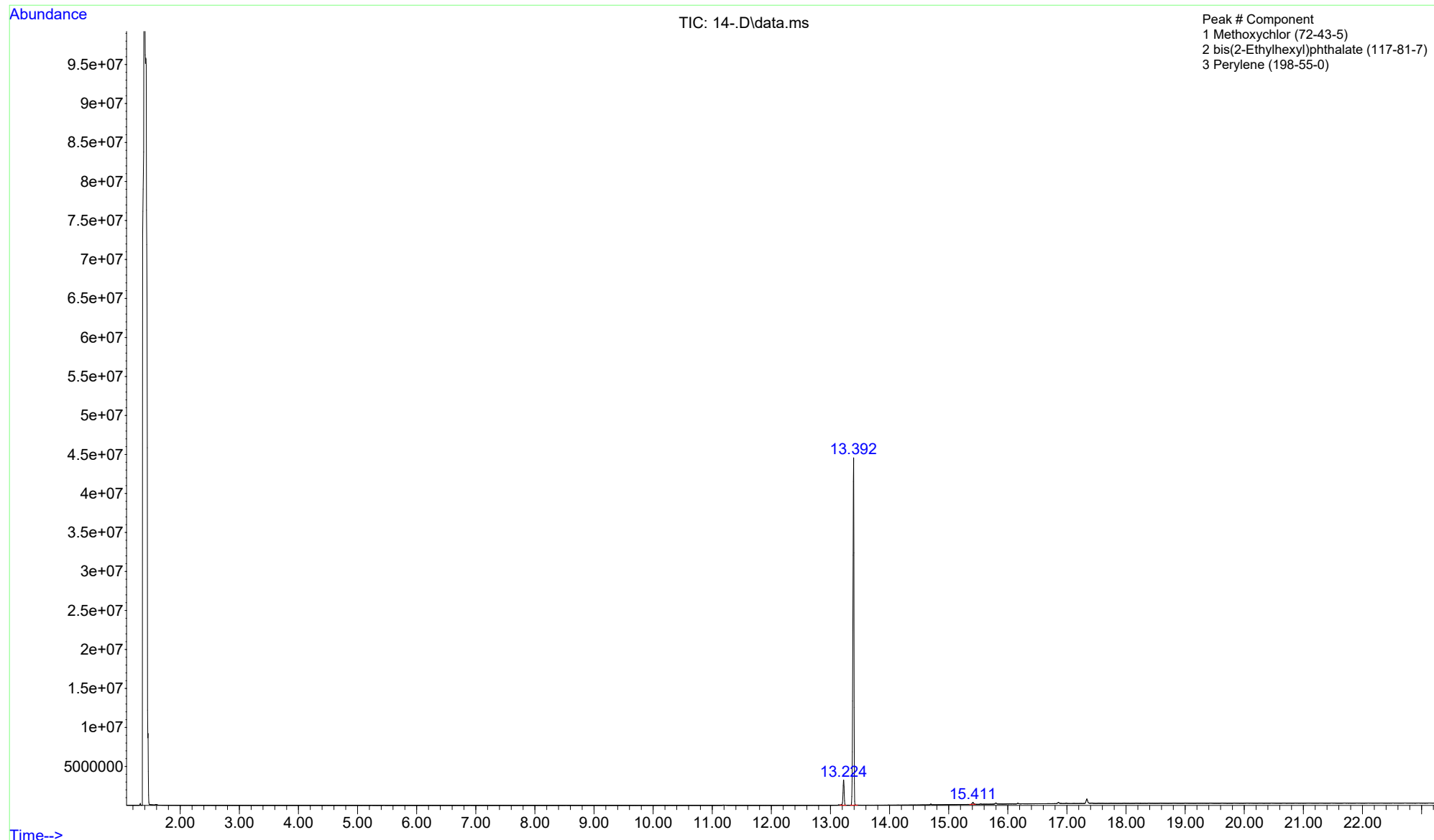


File :Q:\GCMS-06\DATA\013119\14-
Operator : D.C
Acquired : 31 Jan 19 03:38 pm using AcqMethod CHICK_2017.M
Instrument : GCMS 6
Sample Name: CLP-027-WL
Misc Info : GPC Calibration Std Soln. in CH2C12
Vial Number: 37



Column: DB-5MS, 30m, 0.25 ID, 0.25 um
Oven Program: 80c, 17c/min to 340c, 8min
GC Parameters: Cons. Split, 12psi constant flow
Split 20:1, 1uL inj.; GC/MS; INJ 270c



NOTE - Corn Oil is a combination of minor peaks throughout the sample. Sulfur is elemental sulfur not seen by GCMS